



What's in the pipeline?

The Ballina Shire recycled water scheme uses water generated from the Ballina and Lennox Head Water Treatment Plants. Both of these plants have been upgraded to recycled water plants and supply recycled water to sports fields, golf courses and the race track. In the near future they will also supply recycled water to homes and businesses through dual reticulation. Council expects to receive approval from the NSW Government to supply Lennox Head residents with recycled water in the second quarter of 2016. Following that, a date will be set for the Ballina Recycled Water Scheme.

Did you know?

The Lennox Head Waste Water Treatment Plant collects and treats sewage from a mix of 11,000 residential homes and a small number of commercial premises. The volume collected varies depending on the weather but is usually 4 million litres a day. Recycled water is then generated with the new plant capable of producing up to 4.5 million litres a day. The scheme incorporates the original Lennox Head wastewater treatment plant with new plant components including ultrafiltration technology, ultra violet

disinfection and chlorine disinfection to make the water safe.

Although the Ballina and Lennox Head recycled water schemes are yet to provide water to homes, recycled water has been used for outdoor watering and irrigation for a number of years including the Skennars Head Playing fields and the Ballina Golf Course.

Community tours

Early next year community groups will be able to undertake tours of the treatment plants and witness first-hand wastewater being transformed to recycled water.

Tour details will be provided in the local media in early 2016.

Ultra-Violet is not all bad...

With 2.4 million Australians getting sunburnt over a summer weekend, we spend a massive \$71 million per year avoiding sunburn and the skin cancers caused by Ultra Violet light (source – Cancer Council). It's no wonder UV often gets a bad rap.

But did you know the same UV light is used to protect the community when treating water to ensure we have a safe water supply.



Pipe Renewal = Reduced Water Loss = \$ savings

One of the major sources of water loss in the Ballina Shire has been fixed.

The water main on Smith Drive at West Ballina was a 4.5km, 80-year-old pipeline that contributed to almost 16% of the water loss in the Ballina Shire. This equated to an estimated \$1 million in lost water over ten years, not including the cost of maintenance and repairs.

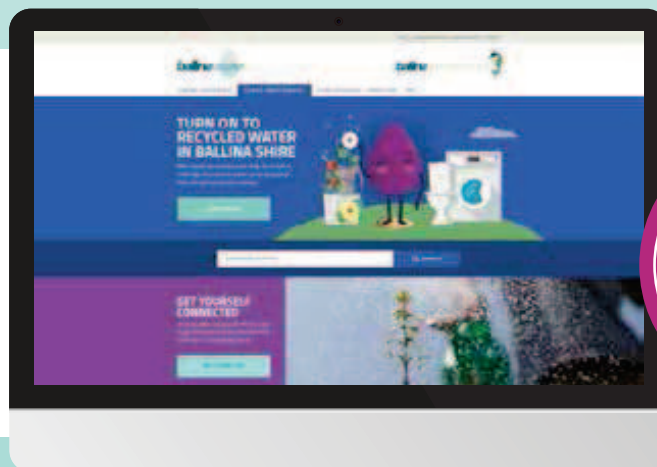
The new Smith Drive water main cost \$1.1 million but this is expected to be recouped in around six years.

www.ballinawater.com.au

Keep an eye out for the new water information and education website to be launched in December 2015.

The new site will have all the information you need to know about recycled water, Ballina's Urban Water Cycle, how to get connected and clearing up water terminology.

www.ballinawater.com.au



new
website
launched
dec

Take a look at *what clogs the pipes....*



Image courtesy: Clarence Valley Council

Wet wipes are clogging up our waste water systems. Although they will flush down toilets, they take months to break down.

Even products labelled 'flushable' should not be flushed as they do not disintegrate like toilet paper. Toilet paper breaks down in minutes but other products remain intact even after months submerged in water.

Other items that should not be flushed but are often found in our waste water system include nappy wipes, cleansing

wipes, nappies, colostomy bags, cotton wool, make-up pads, cotton buds, dental floss, sanitary items, condoms and even plastic toys. These can cause havoc with our waste water system. All these items should be put in the general waste (red lid) bin.

These products block pipes and get caught in the equipment at our waste water treatment plants and pump stations that service your home and those of your neighbours. These breakdowns also add to Council's operating costs.

Worse still, if pipes get clogged on your property you could be faced with a costly plumber's bill.

The message is clear to keep the pipes clean only flush pee, poo and paper down the toilet!

Water Refill Stations in recreation areas

For a cleaner & healthier future

Public refill stations are a better alternative to bottled water for the community, both environmentally and financially.



Council has just installed four water refill stations at the following locations:

1. FAWCETT WHARF, MISSINGHAM PARK
2. BALLINA SKATE PARK
3. SHAW'S BAY CYCLE WAY
4. SHELLY BEACH CARPARK

The refill stations also cater for pets, with refillable water dishes for your canine companion.

The refill stations have been funded by a \$12,960 grant from NSW EPA under the Better Waste Recycling Fund program.



Tap water costs about \$0.002 per litre, while pre-bottled water can cost as much as \$5.00 or more per litre depending on the brand... So fill up at a water refill station – you'll save a bucket load.

EVERYDAY WATER SAVING MEASURES

Everyday Water Saving Measures are currently active for all areas supplied by Rous Water. The Bureau of Metrology is predicting a strong El Niño event is likely to persist until early 2016. During El Niño events the region is likely to experience below-average rainfall and increased temperatures. Rous Water encourages all residents to adopt these **Everyday Water Saving Measures** to ensure sustainable water usage throughout the region. To find out if you are in a Rous Water supply area visit www.rouswater.nsw.gov.au.

Rebates from Rous Water

Rous Water offers rebates to residents for installing a rainwater tank. Rainwater tanks are easy to use and are available in styles to suit most homes.



\$1000*

to purchase and install a rainwater tank



PLUS \$620 when you connect your rainwater tank to all toilets



PLUS \$550 when you connect your rainwater tank to the washing machine

* Terms and conditions apply

For more information contact Rous Water
T: 02 6623 3800 | E: water@rouswater.nsw.gov.au | W: www.rouswater.nsw.gov.au

Saving water around your home

OUTDOOR WATERING

Outdoor watering and water use is permitted between 6 am and 10 am and between 3 pm and 10 pm. This applies to the use of all types of sprinklers, watering systems, hand-held hoses, watering cans and buckets, topping up swimming pools and outdoor spas.

CLEANING VEHICLES AND BOATS

Where possible, vehicles and boats should be washed on the lawn or where the water will run off onto the lawn or garden. Hoses should be fitted with an on/off nozzle. Trigger nozzles are preferred.

DRIVEWAYS, PATHS AND PAVED AREAS

These should be swept and only hosed when necessary such as a fire or health hazard. High pressure water cleaners using 10mL/min or less are recommended.

